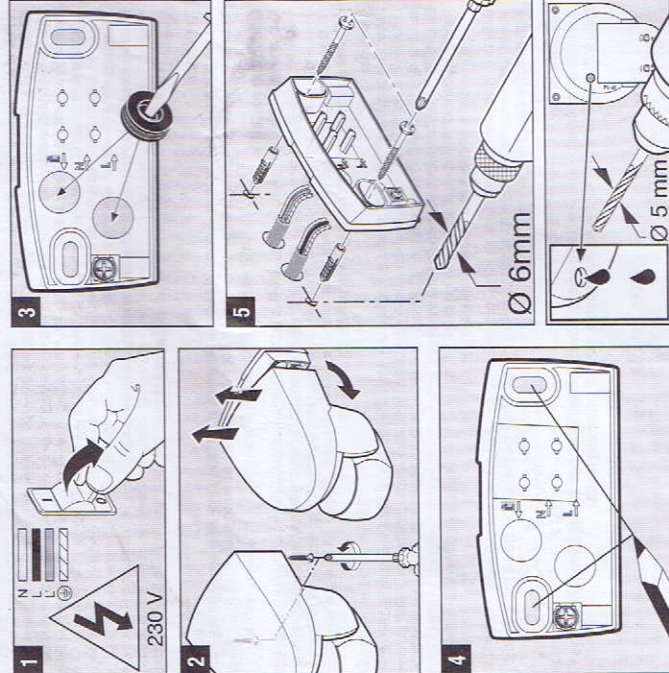


# Information IS 2140 ECO



GB	PL	FR	RO	IT	ES	PT	GR	TR	HU	CZ	SK

83 x 86 x 99 mm	8 sec - 35 min
220 - 240 V~	2 - 2000 Lux
max. 2000 W	IP 54
max. 500 W cos φ = 0,5	
max. 4 x LED / C ≤ 88 μF	
140°	
max. 14 m	
temperature-stabilised	
2 m	



## Principle

Movement triggers lights, alarms and many other devices - for your convenience and safety. The integrated pyroelectric infrared sensor senses the invisible heat radiated from moving objects (people, animals, etc.). The heat detected in this way is converted electronically into a signal that activates the load connected. Heat radiation is not detected through obstacles, such as walls or glass, and will therefore not activate the light.

## Safety warnings

- During installation, the electrical wiring being connected must be dead. Therefore, switch off the power first and use a voltage tester to check that the power supply is disconnected.
- Installing this unit involves work on the mains voltage supply. This must therefore be carried out in accordance with applicable national wiring regulations and electrical operating conditions. (IE-VDE 0100, AT-OVE-ONORM E3001-1, CH-SEV 1000)
- Only use genuine replacement parts.
- Do not dismantle the unit yourself. It must only be repaired by a specialist workshop.

## Installation 1 - 8

- L = live conductor (usually black or brown)
- N = neutral conductor (usually blue)
- PE = any protective earth conductor (green/yellow)

Attention: Loop the protective-earth conductor through if necessary. A mains power switch for turning the unit ON and OFF may of course be installed in the mains supply lead. Important: Reversing the connections may result in damage to the unit. Please note that the circuit must be protected by a 10 A circuit breaker. Optimum mounting height: 2 m for wall mounting.

## Function 13

**Twilight setting** (factory setting: daylight operation at 2000 lux):  
The sensor's response threshold can be infinitely varied from 2 - 2000 lux.  
Control dial set to ☀ = daylight operation at approx. 2000 lux.  
Control dial set to ☾ = night-time operation at approx. 2 lux.  
To adjust the detection zone in daylight, the control dial must be set to ☀ (daylight operation).  
**Time setting** (factory setting: 8 sec.): Light 'ON' time can be set from 8 secs. to 35 mins.  
Control dial set to + = shortest time (8 sec.)  
Control dial set to - = longest time (35 min.)

## Adjust detection zone at swivel mount 7 - 10

7 - 10 Reach can be adjusted to between 2 and 14 m by tilting the lens through 90°. 10 Swivelling for alignment on the wall. 11 Reach 1 - 14 m. Max. setting permits detection along the building wall. 12 Using adhesive shrouds, e.g. to mask out paths or neighbouring property. Important: The most reliable way of detecting movement is to install the sensor so that it points across the direction in which a person would walk and by ensuring that no obstacles (such as trees, walls etc.) obstruct the line of vision. Reach is restricted when you walk straight towards the sensor.

## Troubleshooting (Fault / Cause → Remedy)

No power / Fuse faulty, not switched on → new fuse, turn power switch ON, check lead with voltage tester.  
Will not switch ON / Surroundings still too bright → wait until response threshold is reached or adjust setting / Bulb faulty → change bulb / Power switch OFF → switch ON / Detection zone not properly targeted → readjust.  
Will not switch OFF / Permanent movement in the detection zone → adjust detection zone. Keeps switching ON/OFF / There is a light in the detection zone → change detection zone, increase distance. Switches ON when unwanted / Detecting cars on the road, for example → change detection zone, tilt sensor down.  
Reach changing / Differing ambient temperatures → at low temperatures, shorten reach by tilting sensor down; at high temperatures, tilt sensor up.

## Disposal

Electrical and electronic equipment, accessories and packaging must be recycled in an environmentally compatible manner.  
Do not dispose of electrical and electronic equipment as domestic waste.

## EU countries only:

Under the current European Directive on Waste Electrical and Electronic Equipment and its implementation in national law, electrical and electronic equipment no longer suitable for use must be collected separately and recycled in an environmentally compatible manner.

## Manufacture warranty

As purchaser, you are entitled to your statutory rights against the vendor. If these rights exist in your country, they are neither curtailed nor restricted by our Warranty Declaration. We guarantee that your STEINEL Professional sensor product will remain in perfect condition and proper working order for a period of 5 years. We guarantee that this product is free from material-, manufacturing- and design flaws. In addition, we guarantee that all electronic components and cables function in the proper manner and that all materials used and their surfaces are without defects.

## Making Claims

If you wish to make a claim, please send your product complete and carriage paid with the original receipt of purchase, which must show the date of purchase and product designation, either to your retailer or contact us at STEINEL UK Limited, 25 Manesty Road, Axis Park, Orion Southgate, Peterborough, PE2 6UP, for a returns number. For this reason, we recommend that you keep your receipt of purchase in a safe place until the warranty period expires. STEINEL shall assume no liability for the costs or risks involved in returning a product.

For information on making claims under the terms of the warranty, please go to [www.steinel-professional.de/garantie](http://www.steinel-professional.de/garantie). If you have a warranty claim or would like to ask any question regarding your product, you are welcome to call us at any time on our Service Hotline 07735 365700.

## Service

Our Customer Service Department will repair faults not covered by warranty or after the warranty period. Please send the product well packed to your nearest Service Centre.